



امان اكسل
AMAN EXCEL

www.amanexcel.com





Aman Excel is one of the renowned trading establishments in the Kingdom of Saudi Arabia .

Aman Excel has been constantly been escalating its standards and quality of services provided to ensure full satisfaction of its clients and has been involved in General Trading, Plumbing, Welding, Carpentry, Automotive, Aerospace, Gardening, DIY, Civil Works, Painting, Electrical, Measuring and Calibration, Equipments & Machineries, Bolts, Nuts & Fasteners, Chemicals and Adhesives, Safety and Handling tools and equipment.

Aman Excel expert professionals who handle project execution study the contracts and follow the specifications provide in the contract documents and plant projects in the best manner to execute the project up to client's requirement and satisfaction and achieve the targets set by our clients. Our first concern and focus is Quality control and Satisfaction of our esteemed clients.



OUR MISSION

We are dedicated to providing quality construction, technical and management services to our customers. We will strive to implement a long term relationship with our clients, based on safety, quality, timely service and an anticipation of their needs. To help fulfil this mission, we will treat all employees fairly and involve them in the quality improvement process to insure responsiveness and cost effective work execution.





CORE VALUES

Ethics

Uncompromising Integrity, Honesty & Fairness.

Mutual Respect

We do the right thing and treat each other with respect.

Commitment to international standards of safety and quality.

Commitment to Time and Cost.

Sustainability

We plan and act for the future & continuous development of our company and community.

Professionalism

We maintain the highest standards of Excellence, corporate behaviour and performance



QUALITY POLICY

We strive for 'excellence' by providing customized solutions, products & services that best satisfies the requirements of our Customers and continuously improve quality, reliability & service with the help of an effective Quality Management System, encompassing all statutory, regulatory, health, safety & environment requirements at our work place.

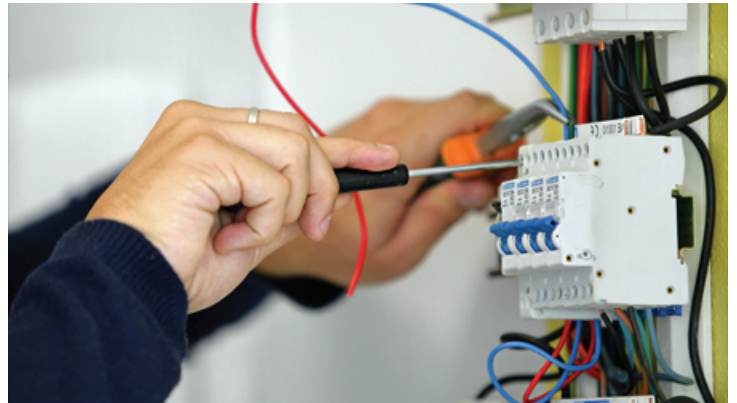
OUR VISION

The vision of Aman Excel is to offer technically compact, reliable and cost effective services to all our esteemed customers.



ELECTRICAL MATERIALS

Aman Excel provides a complete Electrical installations for high rise residential buildings, hotels, industrial complexes, warehouses, villas, etc. The company is an undisputed leaders in the region, marketing a wide range of electrical components serving the regional customers base across Saudi Arabia.



SUPPLY AND INSTALLATION OF L.V. SWITCHGEARS - IEC & ANSI

MODULAR DISTRIBUTION BOARD COMPONENTS

- ⌚ Miniature Circuit breakers
- ⌚ Earth Leakage Circuit Breakers
- ⌚ DIN Rail Mounted Isolators
- ⌚ Modular contractors
- ⌚ Fuse carriers

LOAD BREAK ISOLATORS / ENCLOSED ISOLATORS & CHANGEOVER SWITCHES

- ⌚ Load break disconnecting switches / isolators
- ⌚ Enclosed Isolators & Safety Switches
- ⌚ Weatherproof Isolators
- ⌚ Manual and Motor operated Changeover switches

DISTRIBUTION BOARDS & JUNCTION BOX SYSTEM

- ⌚ Type-tested Panel Boards
- ⌚ Way-type Distribution Boards
- ⌚ Wall-mounted & floor-mounted enclosures
- ⌚ Sheet steel / Stainless steel & Polyester (GRP) Enclosures
- ⌚ Terminal & industrial boxes
- ⌚ Data & communications network enclosures

MAIN DISTRIBUTION / PANEL BOARD CIRCUIT BREAKERS

- ⌚ Air Circuit Breakers (ACBs) 800A-6300A
- ⌚ Moulded Case Circuit Breakers (MCCBs) 16A-2000A to IEC/ANSI

MEDIUM VOLTAGE & LOW VOLTAGE ELECTRICAL EQUIPMENT SYSTEM

- ⌚ Low Voltage & Medium Voltage Switchgear
- ⌚ Variable Speed Drivers
- ⌚ Soft Starters
- ⌚ ATS & UPS
- ⌚ Invertors
- ⌚ Busway
- ⌚ Package / Unit Substations
- ⌚ RMU's
- ⌚ Distribution & Power Transformers



POWER / COMMUNICATION AND WIRES & CABLE MANAGEMENT SYSTEM

XLPE INSULATED CABLES

- ④ PVC Insulated Building Wires
- ④ XL/LSF Insulated Building Wires
- ④ Bare Copper Conductors



MULTICORE INDUSTRIAL CABLES

- ④ PVC Insulated/Sheathed Flexible Cables
- ④ HRPVC Insulated/Sheathed Flexible Cables
- ④ Twin Flat Cables
- ④ Special PVC Control Cables Screened/Unscreened



PANEL/SWITCHBOARD & FIRE PERFORMANCE CABLES

- ④ Tri-rated Flexible Panel Wires 105oC to BS 6231 & complying to IEC, CSA & UL standards
- ④ FR Cables
- ④ LSF Cables
- ④ XLPE Armored Cables 0.6/1KV
- ④ XLPE Unarmored Cables 0.6/1 LSF Armored/Unarmored Cables 0.6/1KV
- ④ XLPE Armored Cables - 11KV - 33KV to ARAMCO, SABIC, RC & SEC specification



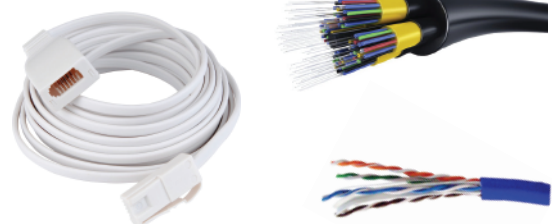
RUBBER CABLES/WELDING CABLES

- ④ Rubber Insulated & Sheathed Cables type H07RNF
- ④ Silicon Rubber Insulated High Temperature Wires
- ④ Weiding Cables



TELEPHONE/DATA/FIBRE-OPTIC/ INSTRUMENTATION/CO-AXIAL CABLES

- ④ Indoor Telephone Cables
- ④ External grade telephone Cables jelly filled
- ④ Cat 5E/Cat 6 UTP/FTP Data Cables
- ④ Fibre-optic Cables - Single mode / Multi mode & Composite Cables
- ④ Instrumentation Cables / Co-axial Cables





STEEL CONDUIT SYSTEM

- ④ EMT Conduits
- ④ Rigid Steel Conduits
- ④ Malleable junction boxes & fittings
- ④ Flexible Steel conduits / PVC coated conduits, Low Fire Hazards (LFH) coated conduits, Braided conduits, Liquid Tight PVC coated conduits
- ④ Fittings for various flexible steel conduits

CONDUIT AND FITTING SYSTEM

- ④ Rigid conduit, fittings and circular boxes
- ④ Flexible PVC
- ④ Nylon Corrugated conduits & Fittings



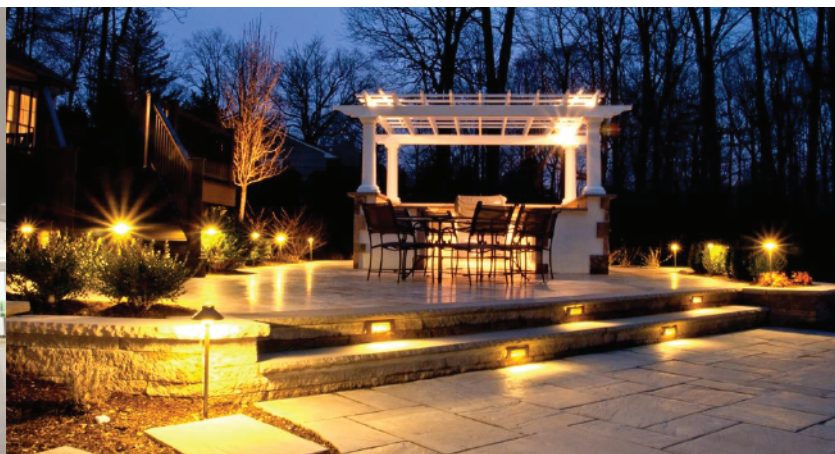
LIGHTING & LIGHTING CONTROLS

AREA / OUTDOOR LIGHTING

- ④ Weather-proof Flood Lights
- ④ Street Lights and poles and accessories
- ④ Garden Lights and Bollards
- ④ Weather-proof Bulkheads
- ④ Buried lights and step lights
- ④ Facade uplighters and downlighters
- ④ Solar-powered garden lights and street lights

COMMERCIAL LIGHTING

- ④ Fluorescent, Aluminium, Prismatic, Louver recessed, Surface mounted Fittings
- ④ Down Lights - LED, Compact Fluorescent & HID
- ④ LED Low Voltage dichroic spot lights
- ④ Strip lights/ Mirror lights
- ④ Decorative Chandeliers & Wall fittings





DECORATIVE LIGHTING

- ④ Rope lights with controllers
- ④ LED Rope lights
- ④ Decorative Chandeliers & wall fittings
- ④ Lighting Poles

INDUSTRIAL LIGHTING

- ④ Low Bay and High Bay fittings
- ④ Weather-proof fluorescent fittings
- ④ Reflector Batten fittings
- ④ Explosion-proof fluorescent fittings and flood lights

LIGHTING & LIGHTING CONTROLS

LAMPS

- ④ LED Lamps
- ④ T5/T8 linear fluorescent tubes
- ④ Circular tubes
- ④ Compact fluorescent lamps & Energy saving lamps.

HID LAMPS

- ④ Blended & High Pressure mercury lamps
- ④ High pressure sodium lamps
- ④ Metal Handle lamps-double ended/screw type base/ G12 base.

HALOGEN LAMPS

- ④ Linear tungsten halogen lamps
- ④ Low Voltage dichronic lamps
- ④ GLS bulbs, candle & luster bulbs, reflector bulbs

BALLASTS/TRANSFORMERS AND CONTROL GEAR

- ④ Ballasts - Electronic & Magnetic
- ④ Dimmable - Ballast (Digital/Analogue)
- ④ Low voltage transformers
- ④ Magnetic / Electronic Ballast for Discharge Lamps
- ④ Open / Closed magnetic control gear for HID lamps
- ④ Electronic control gears for Discharge Lamps
- ④ Capacitors, ignitors & fluorescent lamp starters



WIRING ACCESSORIES

BRITISH / EUROPEAN STANDARD WIRING ACCESSORIES - IEC

- ⦿ Moulded / Metal finish wiring accessories
- ⦿ Modular / Grid switch systems
- ⦿ Weather - proof switches & sockets
- ⦿ Pendant / Batten holders
- ⦿ Plugs and Multi-adaptors
- ⦿ Extension / Trailing sockets & cable reels
- ⦿ IEC Standard Industrial Plugs & Sockets



OTHER PRODUCTS

DOMESTIC, COMMERCIAL & INDUSTRIAL VENTILATING SYSTEMS

- ⦿ Metal exhaust fans with option of louvres
- ⦿ Industrial Air Condition in single phase/ three phase
- ⦿ Industrial man coolers & centrifugal fans
- ⦿ Roof extractors suitable for flat/inclined roofs
- ⦿ Axia Flow fans including multistage, high Performance fans
- ⦿ Air curtains Wall/Glass mounted exhaust fans including auto shutter fans
- ⦿ Insect Killer



CABLE GLANDS / LUGS / CONNECTORS / CLEATS

- ⦿ BW-CW-E1W-A1/A2 Brass Industrial cable glands
- ⦿ Increased Safety & Hazardous Area glands
- ⦿ Copper lugs & connectors & Bimetallic lugs
- ⦿ Cable cleats & fixings suitable for majority of low Medium & high voltage cables
- ⦿ Explosion Proof cable glands, junction boxes



CABLE TRAYS, LADDERS & STEEL SUPPORT SYSTEMS

- ⦿ Galvanized Steel Cable Trays / ladders and accessories
- ⦿ Galvanized Steel Trunking & accessories
- ⦿ Steel support systems
- ⦿ Steel wire baskets
- ⦿ GRP Cable Trays

EARTHING & LIGHTNING PROTECTION SYSTEM

- ⦿ Earthing Rods & Accessories
- ⦿ Inspection pits
- ⦿ Earth housing
- ⦿ Braided bonds
- ⦿ Air Terminal Rods & Accessories
- ⦿ Saddle & Fixings

CABLE JOINTING SYSTEMS

- ⦿ Low Voltage Cable Joints
- ⦿ Cathodic Protecting Joints
- ⦿ Medium Voltage Heat Shrink 15KV Joints in polymeric, paper & transition types

MECHANICAL MATERIALS



Aman Excel is committed to providing high levels of Service and Support for our customers around the kingdom of Saudi Arabia.

We are specialized exporting many kinds of mechanical materials for several years. We have a trained engineering staff ready to take your requirements, translate and convert to metric according to your standards and specifications. We delivers quality products at a competitive price.

VALVES

Aman Excel is a well known dealer, supplier, distributor & Traders of a comprehensive range of industrial valves & Pneumatic Products. Our wide range of products is procured from reputed manufacturing companies. We supply products like industrial valves, Ball Valve, Gate Valve, Glob Valve, Swing Check Valve, Knife Edge Gate Valve, Butter Fly Valve, Strainer Valve, Stop Valve, Air Valve, Safety Valve, Steam Valve, Steam Trap and other All Types of Valves. We are committed to timely delivery, client's satisfaction, quality of products, installation assistance and testing facilities. All these add up our adherence to establish ourselves as a key player among our competitors worldwide.



FLANGES



Being a reputed organization in the kingdom of Saudi Arabia, we are engaged in trading and supplying a quality approved range of industrial flanges.

Comprehensive range of Flange, which is in great demand in the market for various features are available with us. All these products are procured from the reputed vendors, who make use of superior quality raw material in the entire production process using all the latest tools and machines, which helps us in imparting desired shapes and sizes to these products. All these products are offered to the clients at leading market prices.

PIPES AND PIPE FITTINGS



Aman Excel is counted amongst the most promising firm in the kingdom of Saudi Arabia delivering a qualitative range of pipe & Pipe Fittings.

Our clients expect products that provide high pressure and leakage proof fittings. Our focus to deliver quality at competitive costs earned us the repute of a client centric organization carving a niche in the industry. Due to the understanding proficiency and innovative products, we have established a nationwide presence and reckoned as the pioneering business entity developing matchless range of fittings at a competitive price.

NUTS AND BOLTS

We supply a wide range at competitive conditions. We have a large stock on hand in stainless steel A2 (304) and A4 (316), also in classes 70 and 80. Hexagon head bolts and socket cap screws are also standard available in the higher grades 10.9 and 12.9.

Our commitment towards quality and efficiency provides high level of customer service and help us to maintain solid relationship between our clients and business partners.



THREADED ROD

Providing you the best range of threaded rod, zinc plated threaded rods, unf threaded rods, bsw threaded rods, unc threaded rods and zinc coated threaded rod with effective & timely delivery.

We are one of the leading manufacturer and supplier of Thread Rod. We engaged in deliver quality product to our clients. These are made of finest quality stainless steel under strict quality control. Our range is highly acknowledged for its attributes of suitable tolerance, high performance, durability and high tensile strength. These are also available in various sizes to meet the different needs of the clients.



LIFTING EQUIPMENTS

We represent as authorized distributors and stockist of the quality products from reputed manufacturers of rigging products. Van Beest brand Excel and Green Pin range of products. Shackles up to 1500 tons with Lloyds certification, spelter sockets, turnbuckles, etc.

The commitment of all of us at Aman Excel, is to offer the best service to our customers, providing not only the latest developments, but also ensure the best and highest quality of services and products offered by professionals who make up our team , and by our collaborators.



VAN BEEST - GREEN PIN AND EXCEL

Van Beest is a leading manufacturer and supplier for a complete program of high quality standard fittings for lifting chain and steel wire rope. Registered trade marks: Green Pin® for shackles and EXCEL® for chain accessories. Van Beest currently has branches in the Netherlands, Germany, France and USA, and stock holding distributors in more than 80 countries world wide. Green Pin® products range comprise of Shackles from 1 ton to 1500 ton as per EN standards, Thimbles, Wire Rope Clips, Sleeves, Spelter Sockets, Turnbuckles, Swivels, Hooks, Eye bolts, Load Binders, Plate Lifting Clamps, Snatch Blocks and Stainless Steel Products.



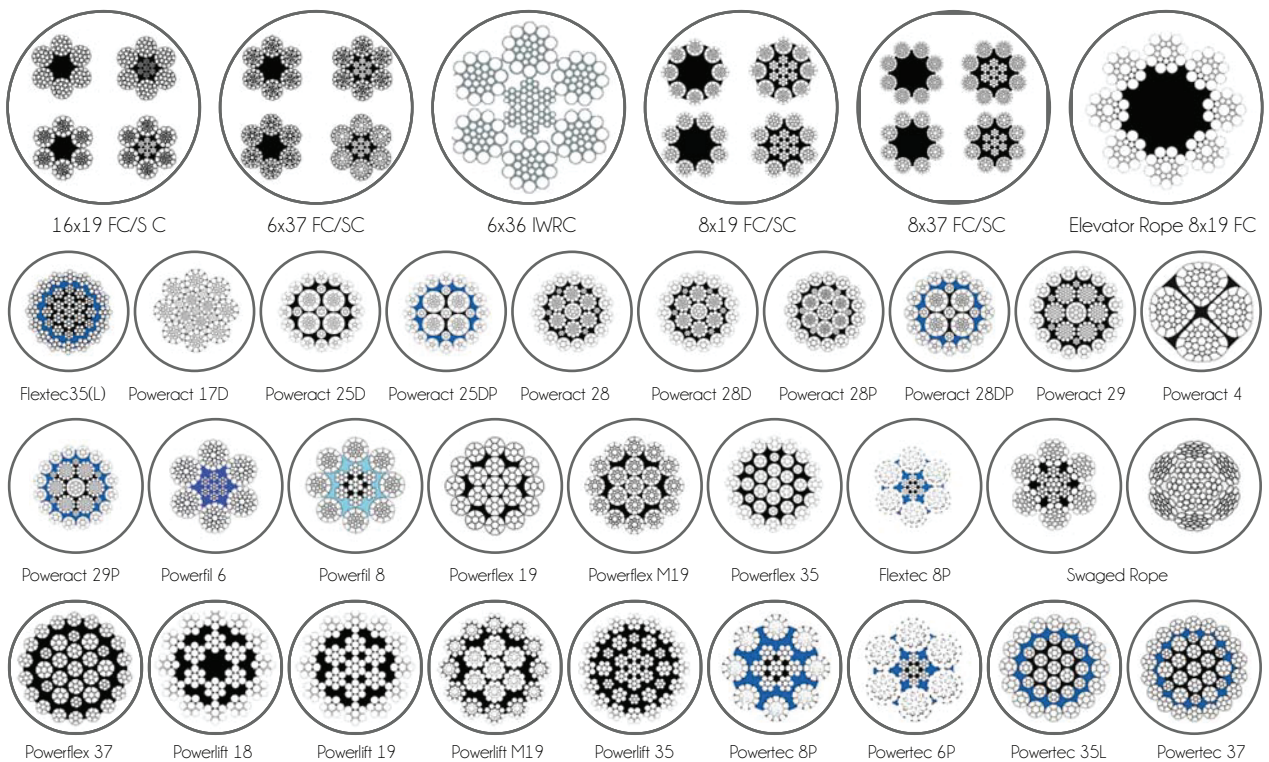
The EXCEL® range of chain accessories is very complete, you will find everything you need to make a chain assembly in the program. From the master link to hook, fitted with an eye, swivel or clevis. The range not only contains grade 80 products; almost every product can also be supplied in grade 100

WIRE ROPES

We supply high quality wire ropes and synthetic ropes from world class wire rope manufacturers for mooring, lifting, oil and gas, fishing mining, leisure, logging, crane, automotive, general use, electronics, construction, agriculture, and consumer goods sectors.



WIRE ROPE CONSTRUCTIONS



SYNTHETIC ROPES



WIRE ROPE SLINGS



Eye & Eye



Thimble & Thimble



Thimble & Shackle



Master Link & Shackle



Master Link & Eye



Master Link & Safety Hook

WIRE ROPE SLINGS FITTINGS



Master Link



ML Assembly



Eye SL Hook



Eye Sling Hook



Chocker Hook



Swivel Hook



Wire Rope Clamp



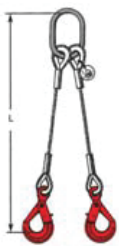
Steel Ferrule



HD Thimble



Single Leg



2 Leg



4 Leg

Rope Diameter	Single Leg	Leg Angle 0-90 °		Leg Angle 90-120 °		Minimum Break Load	Proof Load per Leg at 0 Degrees
		2 Leg	3&4 Leg	2 Leg	3&4 Leg		
8	0.82	1.10	1.70	0.82	1.20	4.1	1.64
9	1.0	1.4	2.1	1.0	1.5	5.2	2.0
10	1.3	1.8	2.7	1.3	1.9	6.42	2.6
11	1.5	2.1	3.1	1.5	2.2	7.77	3.0
12	1.8	2.5	3.8	1.8	2.7	9.25	3.6
13	2.1	2.9	4.4	2.1	3.1	10.8	4.2
14	2.5	3.5	5.2	2.5	3.7	12.6	5.0
16	3.3	4.6	6.9	3.3	4.9	16.4	6.6
18	4.1	5.7	8.6	4.1	6.1	23.0	8.2
19	4.6	6.4	9.6	4.6	6.9	23.1	9.2
20	5.1	7.1	10.7	5.1	7.6	28.4	10.2
22	6.2	8.7	13.0	6.2	9.3	31.1	12.4
24	7.4	10.3	15.5	7.4	11.1	41.0	14.8
26	8.6	12.0	18.0	8.6	12.9	43.4	17.2
28	10.0	14.0	21.0	10.0	15.0	55.8	20.0
32	13.1	18.3	27.5	13.1	19.7	72.9	26.2
35	15.7	22.0	33.0	15.7	23.6	87.2	31.4
36	16.6	23.2	34.9	16.6	24.9	92.2	33.2
38	18.5	25.9	38.9	18.5	27.8	103	37.0
40	20.5	28.7	43.0	20.5	30.8	114	41.0
44	24.8	34.7	52.1	24.8	37.2	138	49.6
52	34.7	48.6	72.9	34.7	52.1	193	69.4
54	37.2	52.1	78.1	37.2	55.8	207	74.4
56	40.1	56.1	84.2	40.1	60.2	223	80.2
60	46.0	64.4	96.6	46.0	69.0	256	92.0
64	54.2	75.9	114	54.2	81.3	301	108.2
71	64.8	90.7	136	64.8	97.2	360	129.6
77	76.5	107	161	76.5	115	425	153.0

This table confirms to BS EN 13414-1:2003/A:2005(E)

ELECTRIC CHAIN HOIST

HITACHI

CACO
COLUMBUS MCKINNON

PFAFF
silberblau

Yale

CHESTER
HOIST



PNEUMATIC CHAIN HOISTS

HAND CHAIN HOISTS



STEEL PLAIN TROLLEY HOIST



MODEL RPE



CONSOLE-MOUNTED ROPE WINCH



MODEL YC



PALLET TRUCK 2.5 TON - 3TON

TOYO - JAPAN LIFTING EQUIPMENTS



MANUAL CHAIN BLOCK UP TO 30T



MANUAL LEVER HOIST UP TO 9T



WIRE ROPE PULLER UP TO 5.4T



PLAIN TROLLEY



CDH VERTICAL LIFTING CLAMP



CD VERTICAL LIFTING CLAMP



HORIZONTAL LIFTING CLAMP



PIPE LIFTING



CLAMPBEAM



CLAMPPLATE CLAMPS



G80 & G100 CHAINS AND FITTINGS



POLYESTER WEBBING SLINGS



POLYESTER ROUND SLINGS



RATCHET CARGO LASHING

DRILLING RIG FABRICATION

Aman Excel engineering and fabrication capabilities are tailored towards the oil and gas drilling industry. We are capable of designing for the customer's specific application or we can provide previously engineered products to support the customer's needs.



SKIDDING SYSTEM



INDEPENDENT ROTARY SKID



OFFSHORE PIPERACK PANEL SKID



SACK LAYDOWN SKID



PIPE RACKS



INTERMEDIATE MUD TANK



BIG BAG LIFTING BEAM



SUPER SACK LIFTING RINGS



BOP LIFTING RINGS FRAMES



METAL SKIDS



CRADLES



BOP SCAFFOLDING PLATFORMS

GENERAL STEEL FABRICATION

Aman Excel provides a world-class fabrication, welding and precision machining service. We design and fabricate a wide range of reliable products and components to the highest specifications. We offer a complete design, manufacture, installation and commissioning service to any industry where higher production is the criteria.



STEEL BUILDINGS



LIFTING BEAMS



VESSEL PLATFORM LADDER



EQUIPMENT SUPPORT STRUCTURE



STORAGE TANKS



CONTAINERS



BINS



CARGO BASKETS



MAN BASKETS



INDUSTRIAL SAFETY & PERSONAL PROTECTION EQUIPMENT (PPE)

We represent some of the best brands and the largest manufacturers in the safety industry. Our clients include the largest corporations within the petrochemical, construction, chemical and manufacturing industries within the kingdom of Saudi Arabia.

Quality and Competence are the basis of our work. Our commitment to provide safety products of the highest quality for the benefit of the customers has remained our top priority. Our technical experts ensure that the customer gets the right product for the job first time round.

Our goal of progress and foresight, reaffirms the company's continuing aspiration to supplying our valued customers with new innovative products that satisfy their many demands. We carry a large inventory of personal protective equipment and many other occupational health and safety supplies, enabling us to readily supply the products on demand when it counts the most.



HAND PROTECTION



HEAD PROTECTION

3M



HEARING PROTECTION



EYE PROTECTION



BODY PROTECTION





MARINE EQUIPMENT

Aman Excel deals with all kinds of marine equipment's and spare parts. Besides carrying quality of marine & industrial equipment, our services are outstanding. From salespeople to top-level management our associates are intimately familiar with the marine & industrial needs of our customers.

We are keen and dedicated to treat all of our customer even better than they expect to be treated so that they regard us as the best organization in marine industry. Our mission is to be the best supplier of Marine products and services that are perceived by our customers to meet these fundamental requirements and also meet or exceed their expectations in terms of excellence of service, support, and customer care.



LIFTING EQUIPMENT



POLYFORM BUOYS AND FENDERS



PYROTECHNICS



LIFE SAVING EQUIPMENT



ANCHORS, CHAIN & ACCESSORIES



ANODES FOR CATHODIC PROTECTION



CONTAINER LASHING PARTS



GENERAL DECK & CABIN EQUIPMENT



MARINE CHARTS & PUBLICATIONS



MARINE CHEMICALS & GAS



NAVIGATION EQUIPMENT AND INSTRUMENTS



NAVIGATION MARINE LANTERNS/BEACONS



ROPES



SIGNS



SPILL CONTROL PRODUCTS FOR OIL & CHEMICAL

BEST BRANDS IN SAFETY UNDER ONE ROOF





AMAN EXCEL TRADING CO.
CR. No. 2050163528
P.O. Box 6298, Riyadh 11442
Branch : Dammam
Kingdom of Saudi Arabia
Phone : +966 54 371 6700
Fax : +966 54 371 6700
Email : sales@amanexcel.com
Website : www.amanexcel.com



امان اكسل
AMAN EXCEL